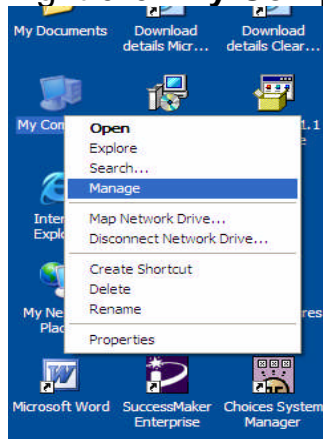


## New Flash Drive – Mapping A Network Drive To Z:

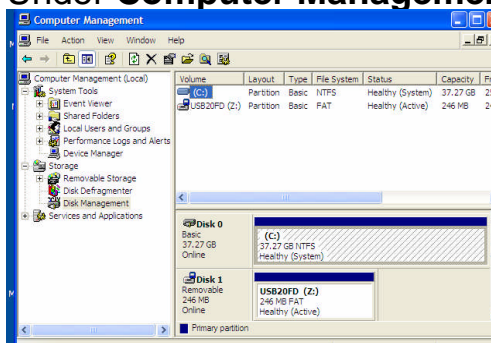
To prevent mapping conflicts from occurring, when you map a network drive, assign **Z:** the highest available drive letter to the mapped network drive.

Insert the PNY flash drive in an available USB connection located in the back of the computer. To detect the new device in Disk Management, specify **Z:** as the drive letter for the new device or volume. To do this, follow these steps:

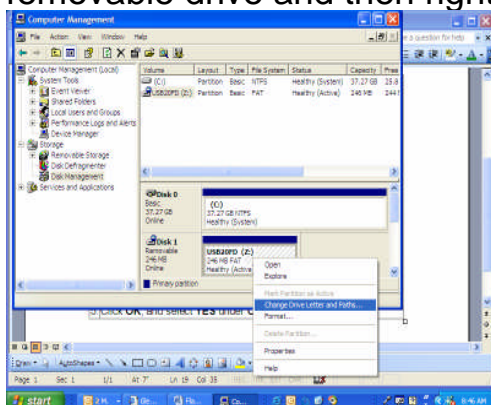
1. Right-click **My Computer** and then click **Manage**.



2. Under **Computer Management (Local)**, click **Disk Management**.

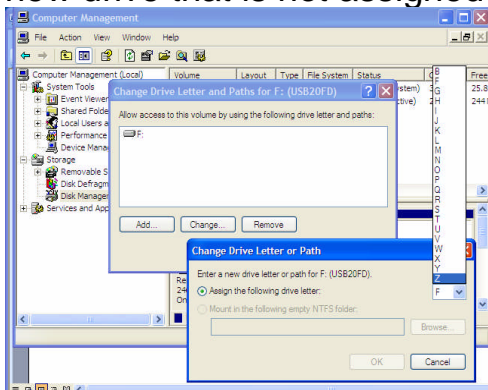


3. In the list of drives in the right pane, right-click the new **Disk 1** removable drive and then right click **Change Drive Letter and Path(s)**.

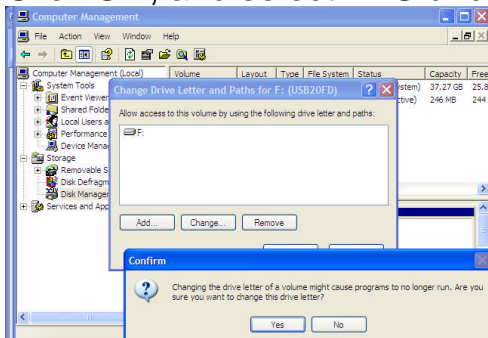


## New Flash Drive – Mapping A Network Drive To Z:

- Click **Change**, and in the drop-down box, select **Z:** as drive letter for the new drive that is not assigned to a mapped network drive.



- Click **OK**, and select **YES** under **Confirm**.



Both the mapped network drives and the recently installed drive appear in Windows Explorer.